



Enterprise Application Integration

Erfahrungen aus der Praxis

Teil 4: EAI und .NET, EAI und J2EE

Überblick

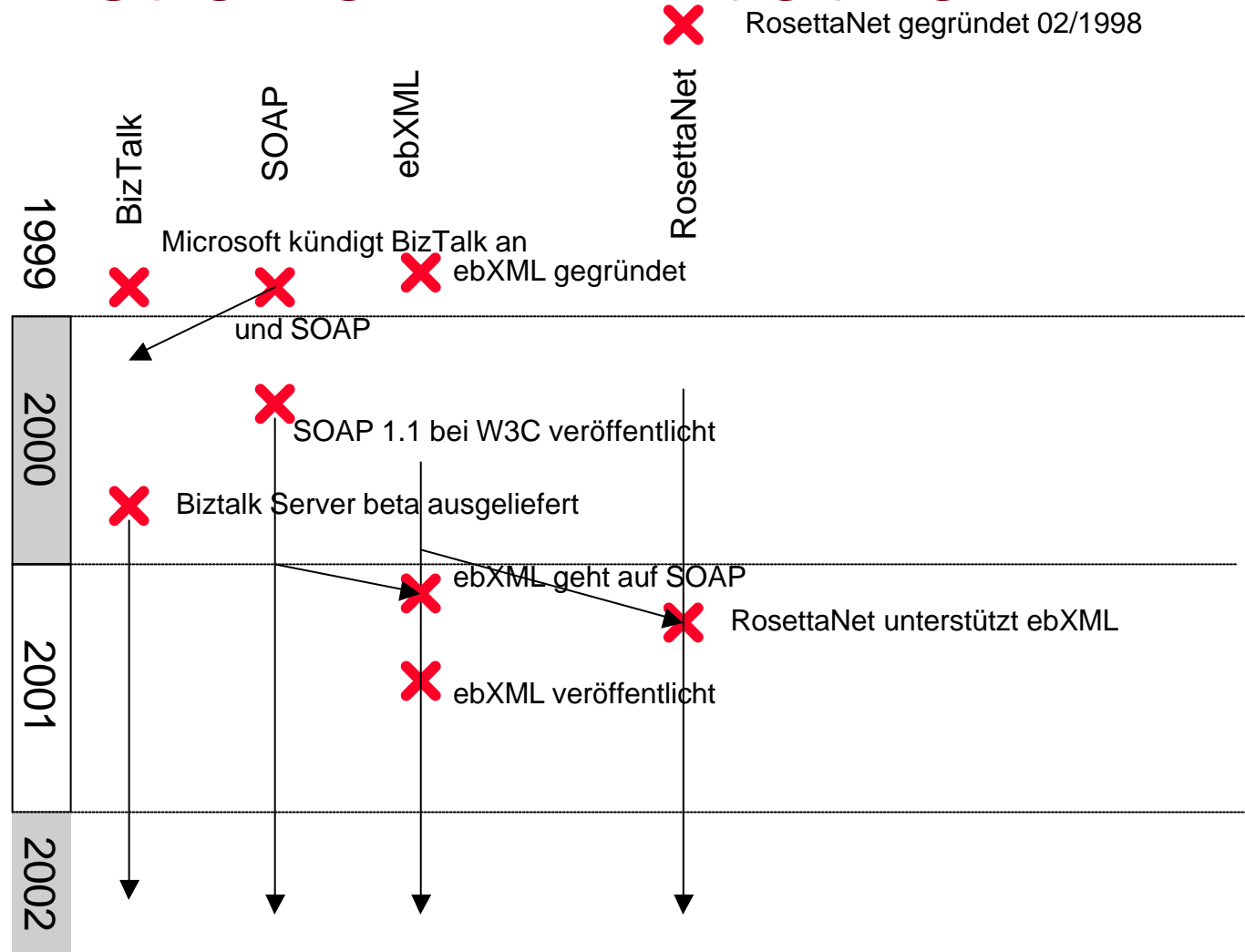


EAI und ...

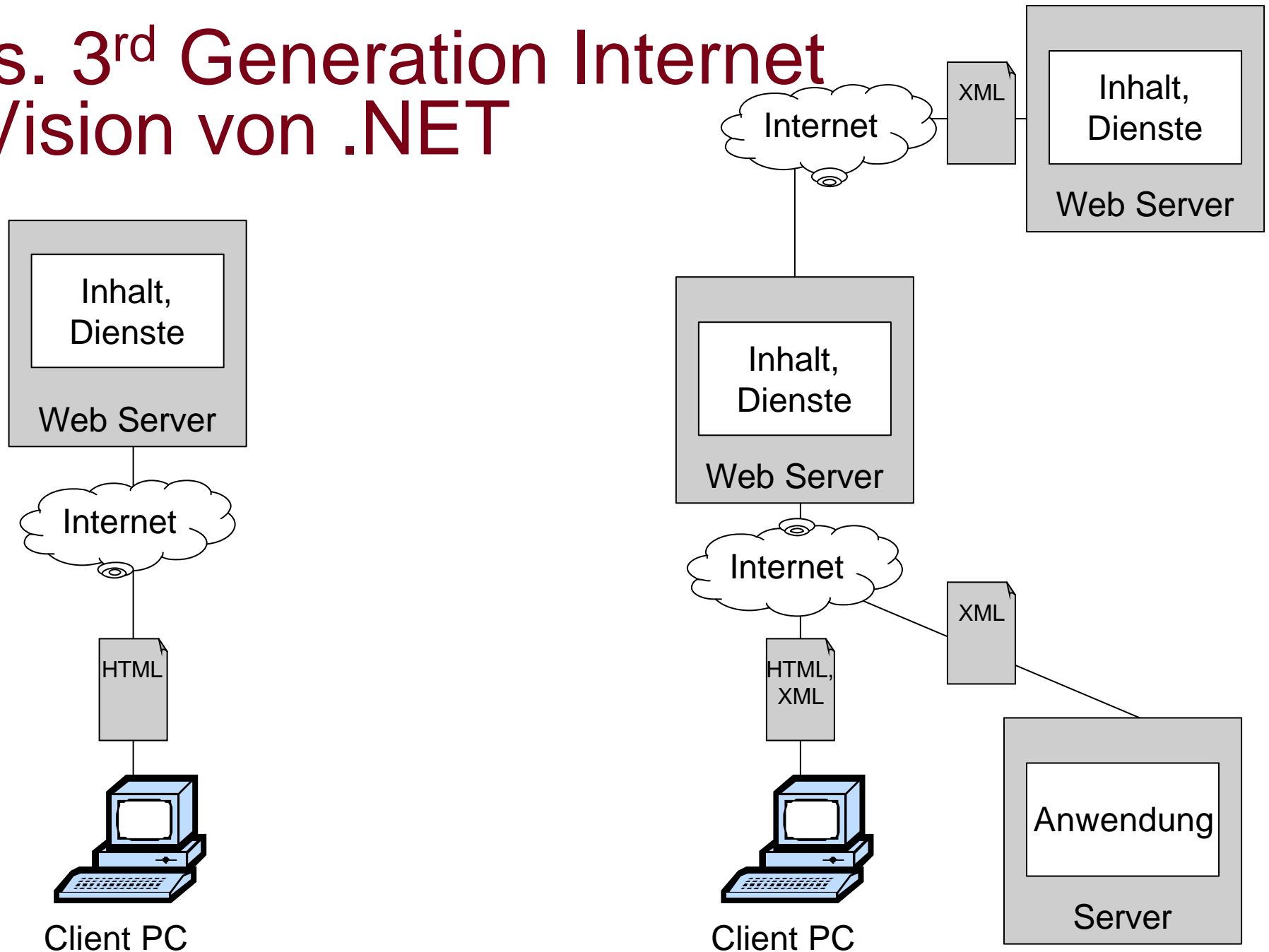
- .NET
 - kurze Einführung .NET
 - EAI Funktionen in .NET
 - einige wichtige B2B Initiativen
- J2EE
 - Wo ist „EAI“ in J2EE angesiedelt?
 - die J2EE Connector Architecture

B2B Mafia Chart

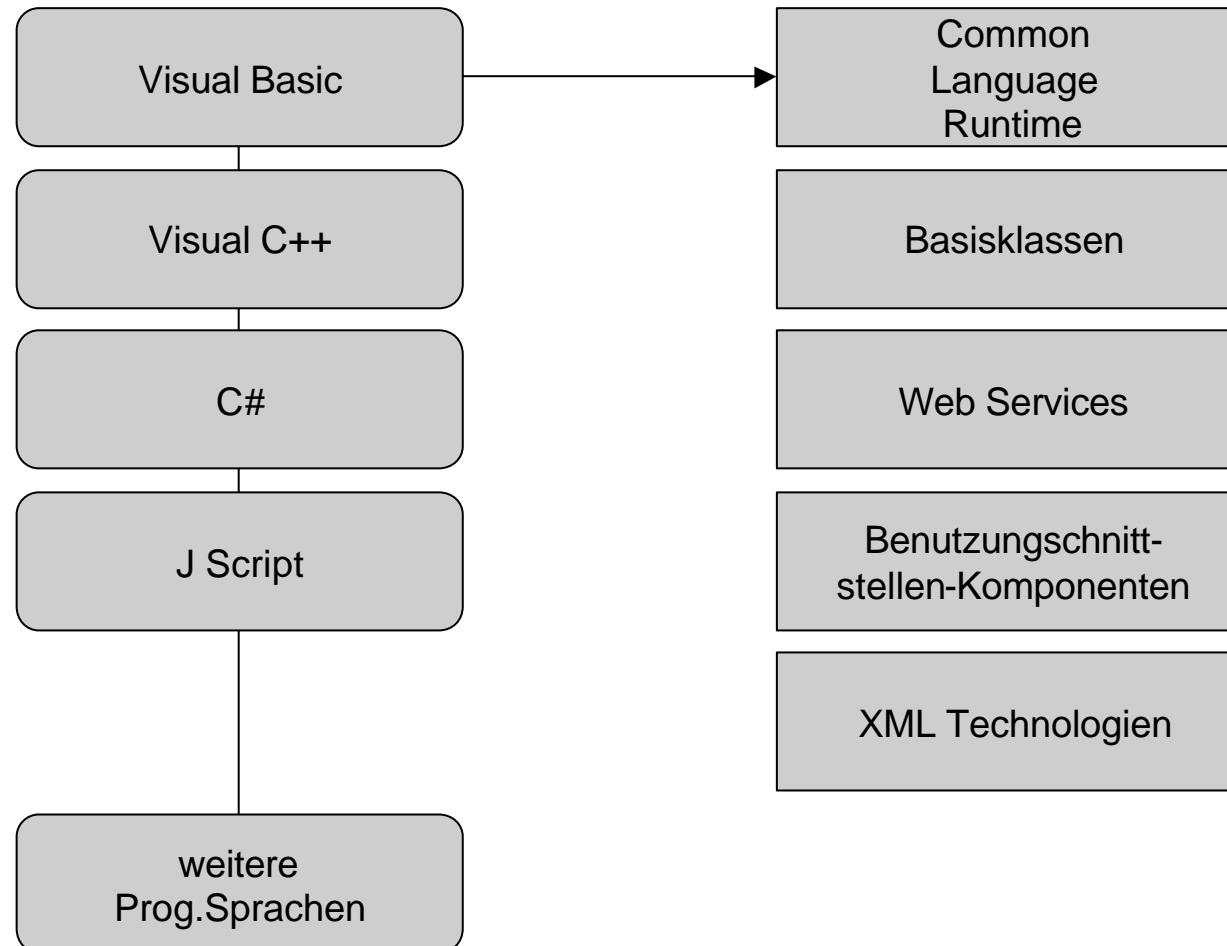
BizTalk ist eine B2B Initiative



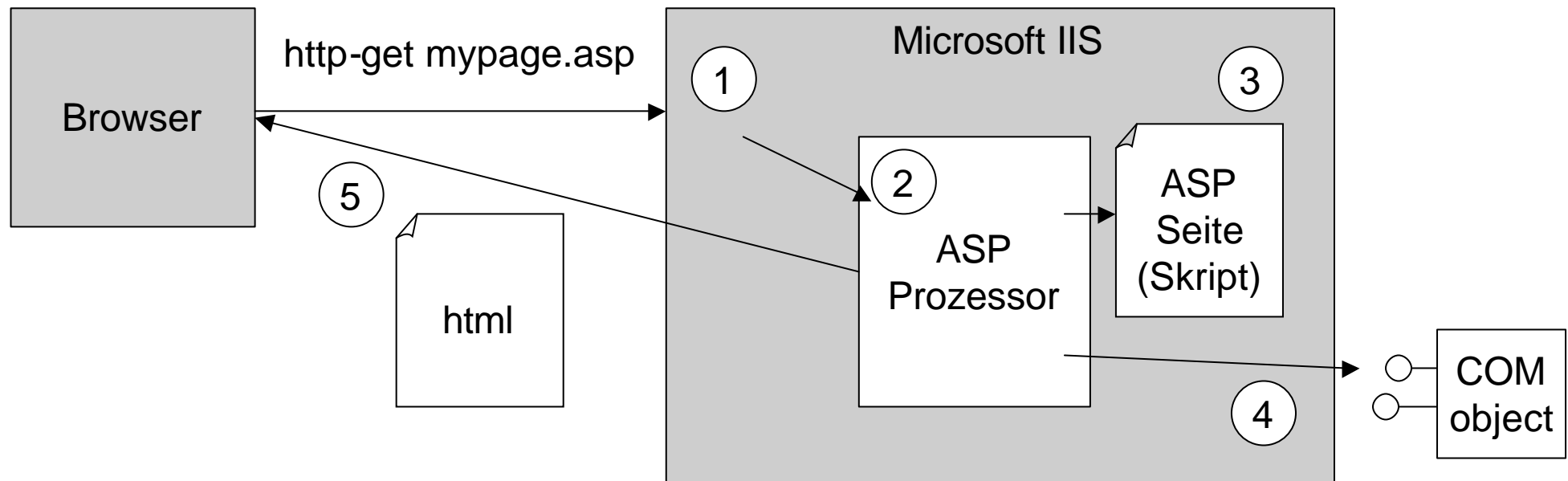
1st vs. 3rd Generation Internet die Vision von .NET



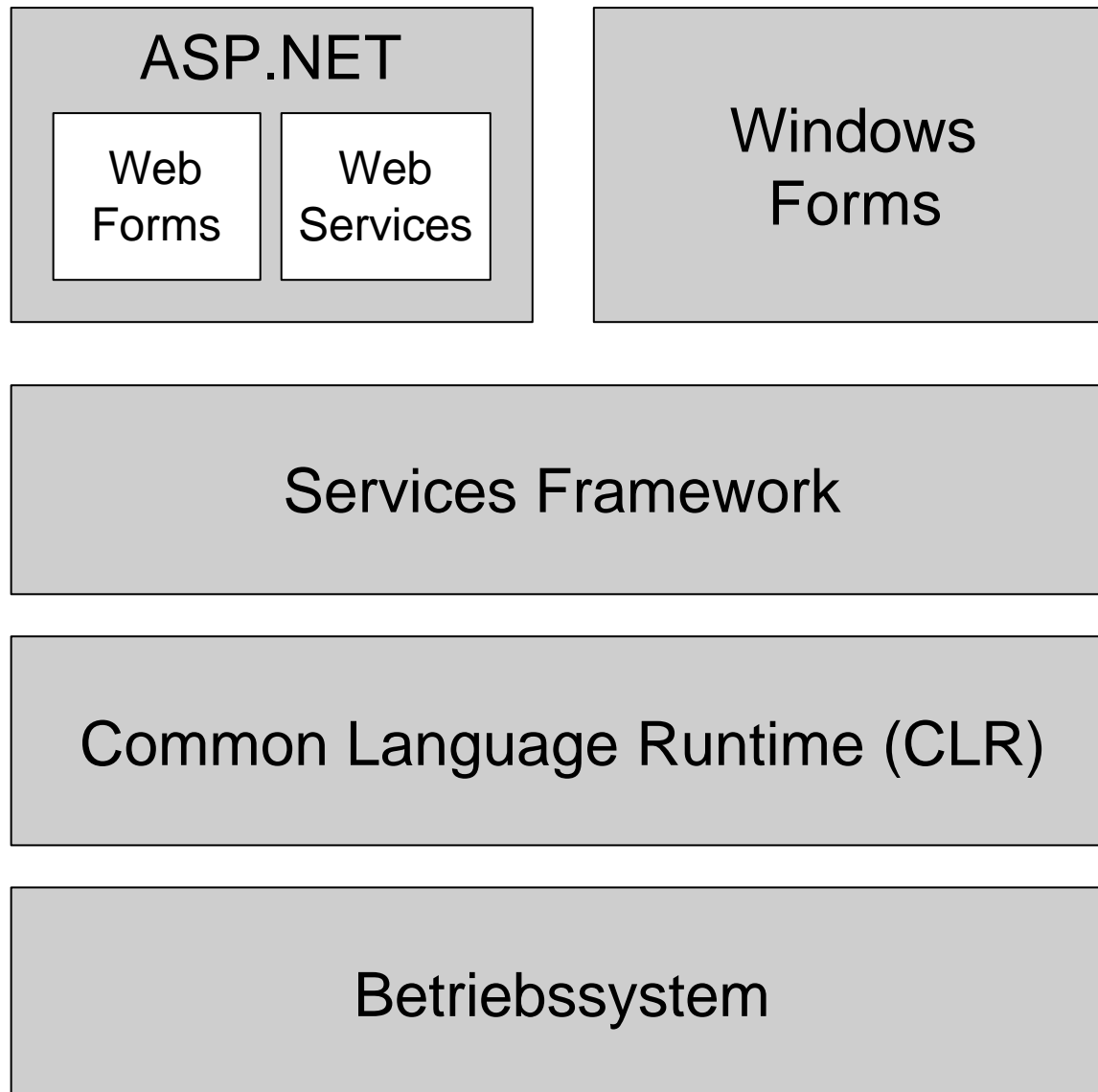
.NET high level



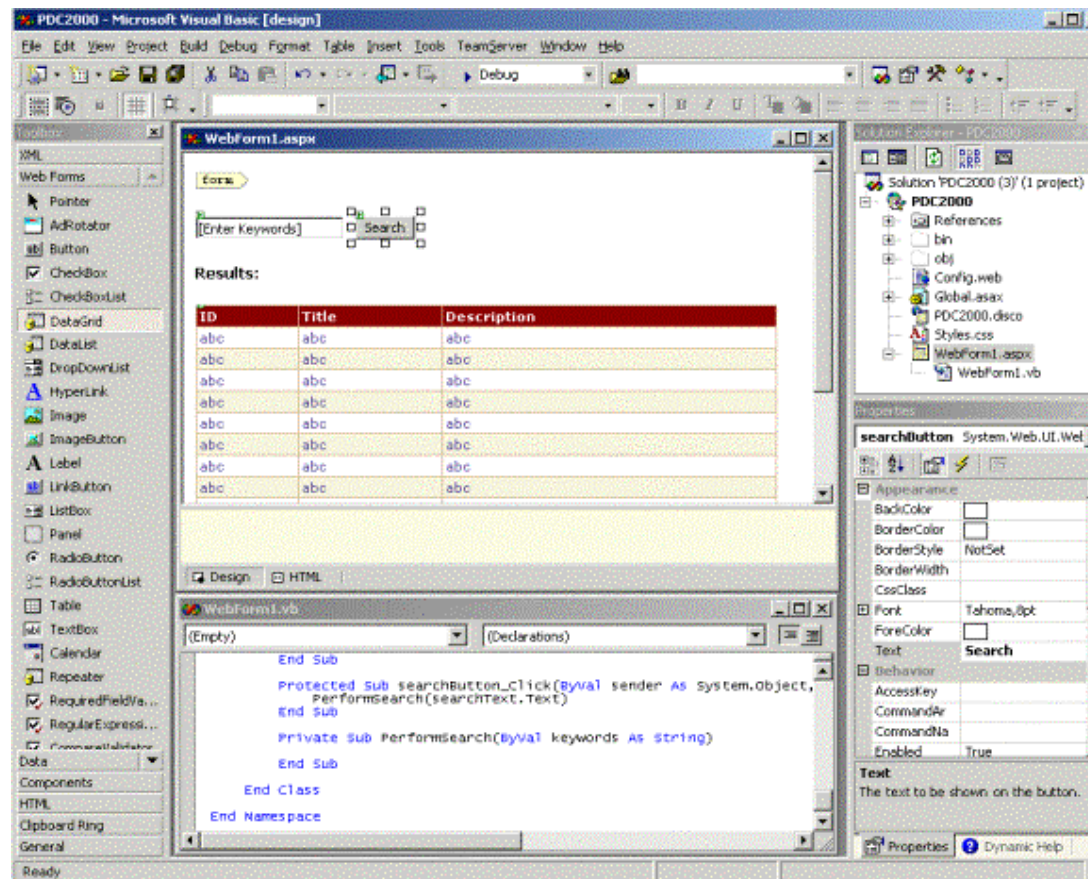
asp alt



asp neu



Beispiel Web Forms in Visual Studio





SOAP und Web Services



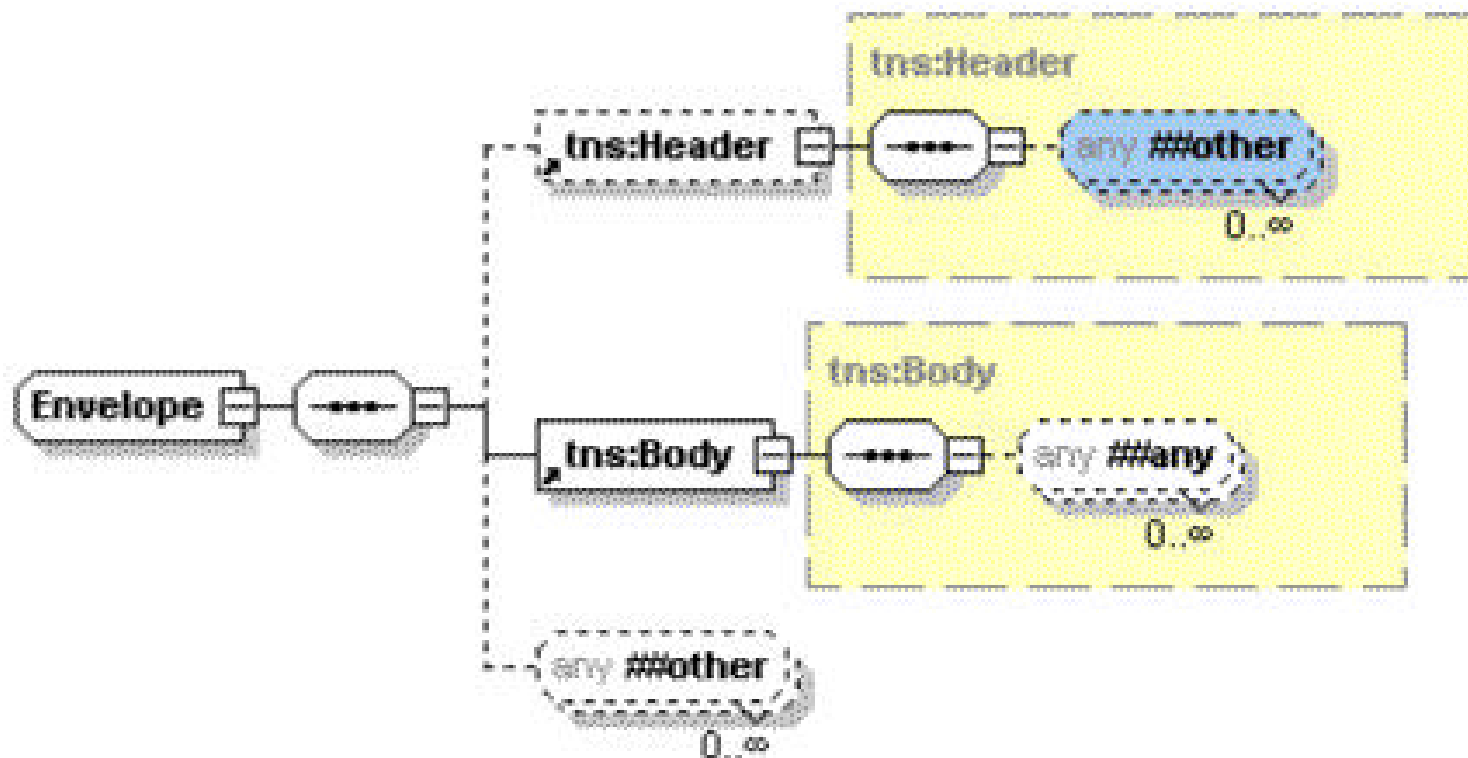
Was ist ein Webservice

- ein Service, den man über ein Internet Standard – Protokoll aufrufen kann

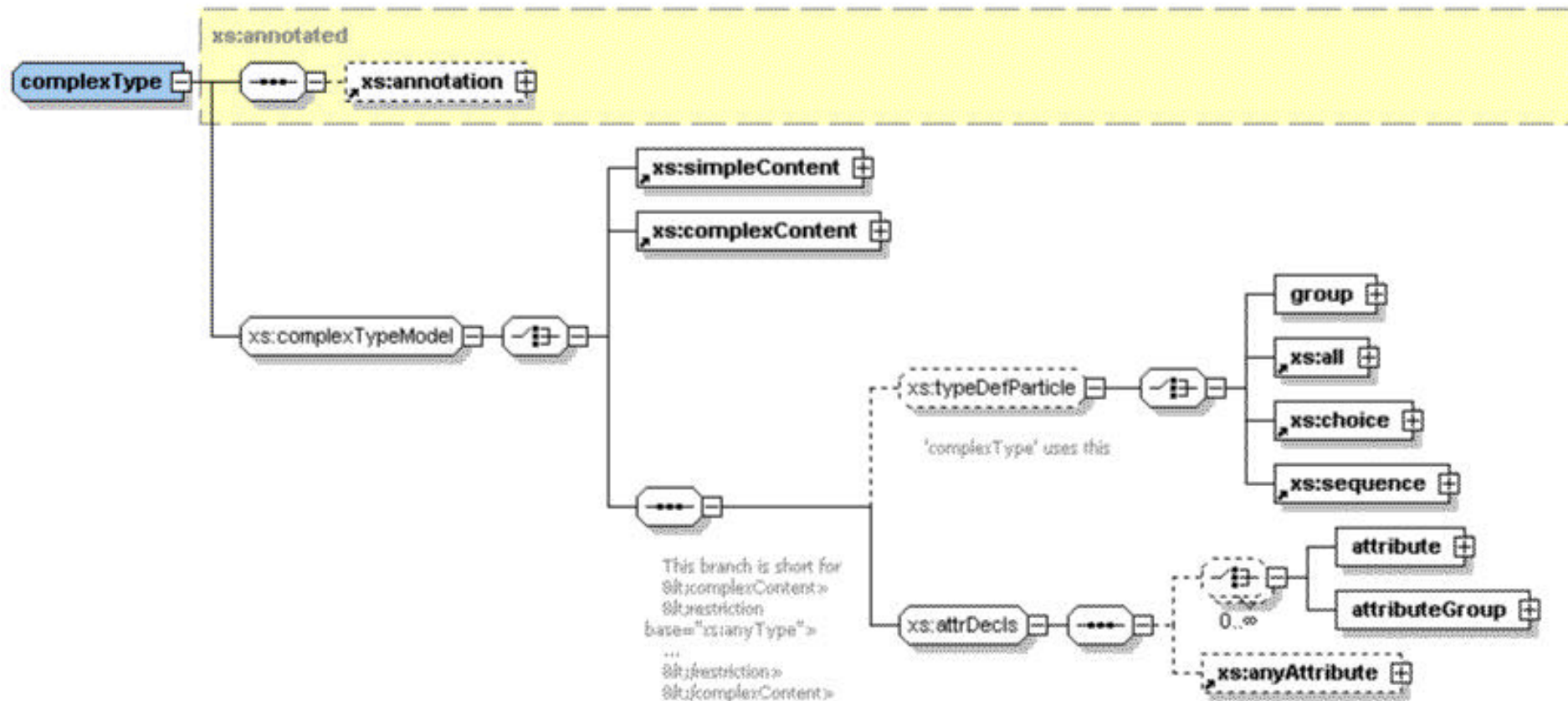
Gemeint aber eher ...

- Service der über http mit SOAP aufgerufen wird ...
 - Simple Object Access Protocol
 - ist eine XML Definition

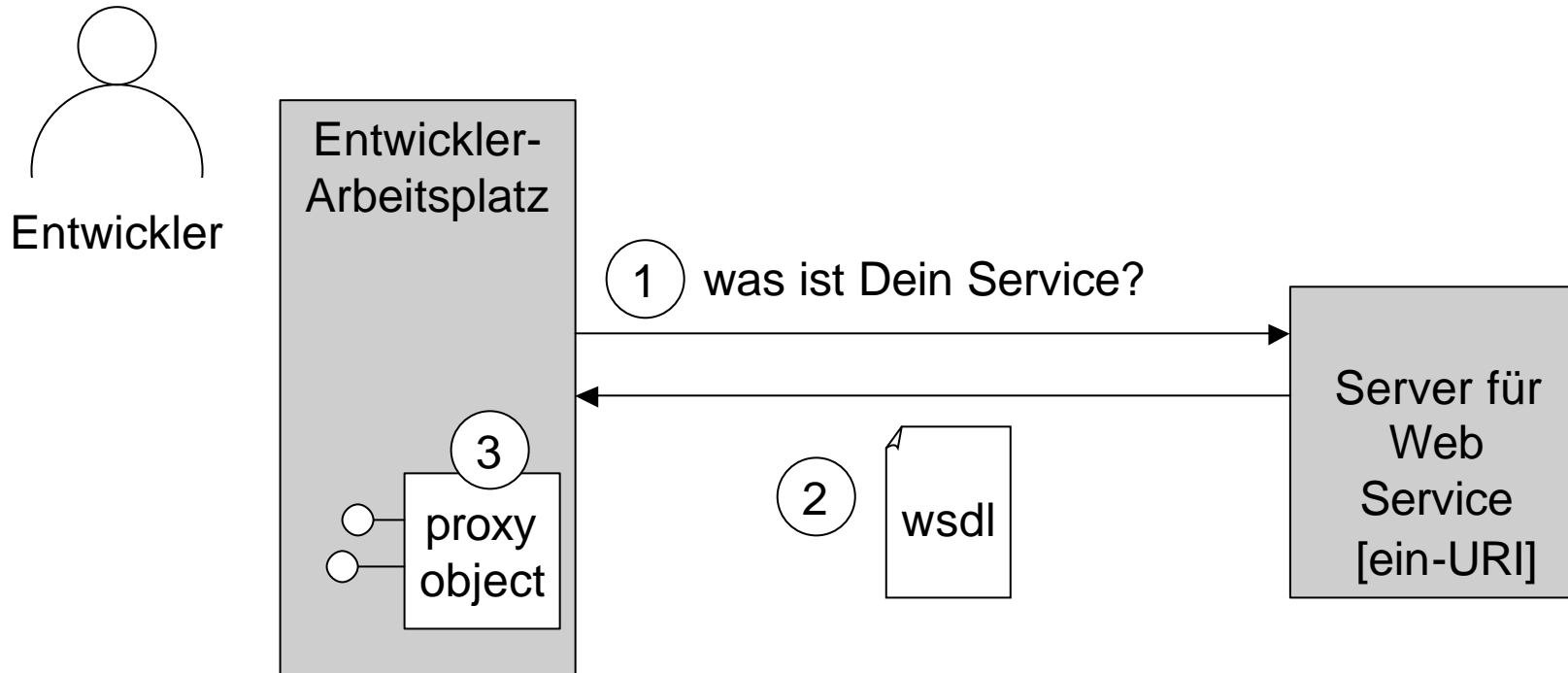
SOAP envelope



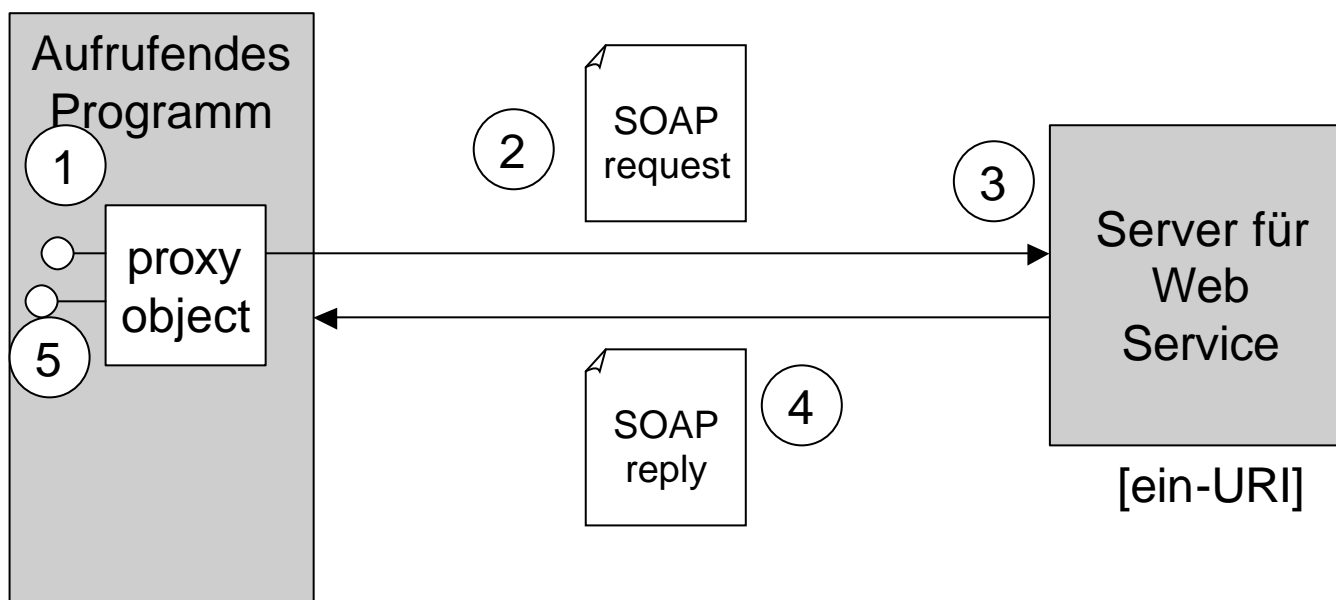
XSD Schema

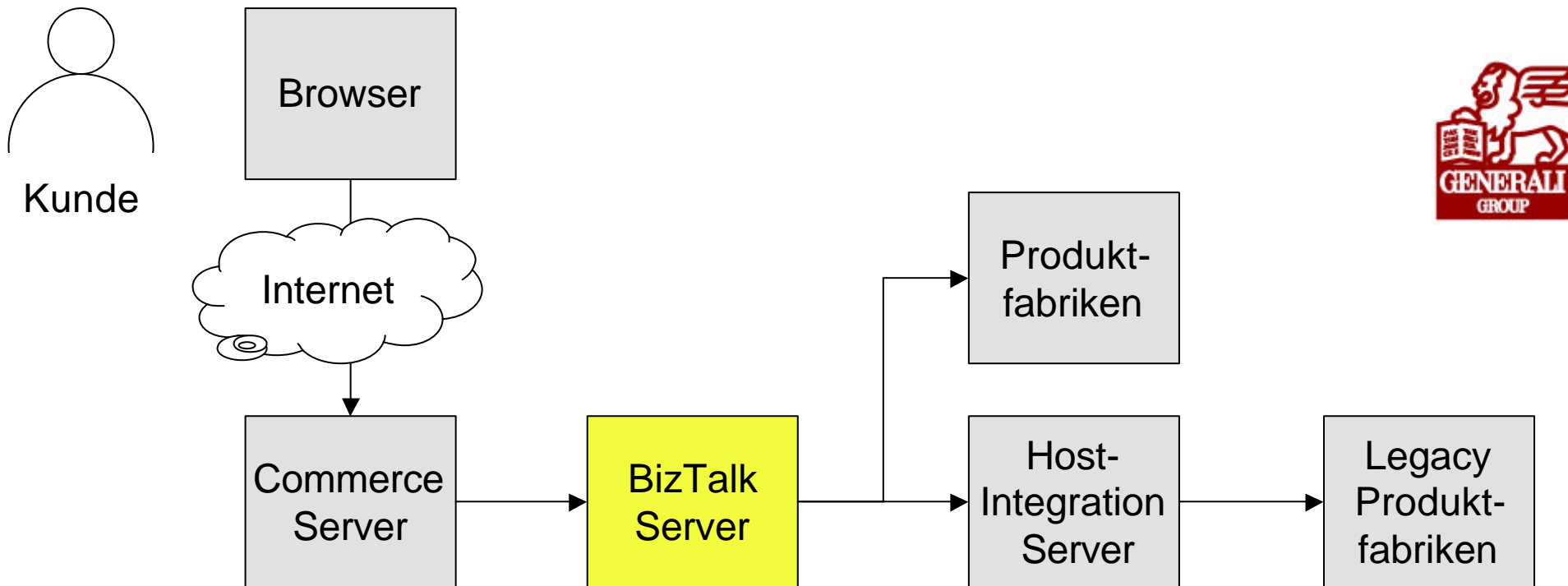


Web Service Benutzung entwickeln – Beispiel .NET

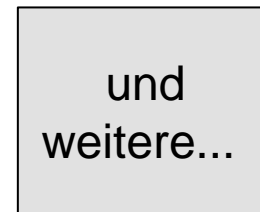


Web Service verwendet

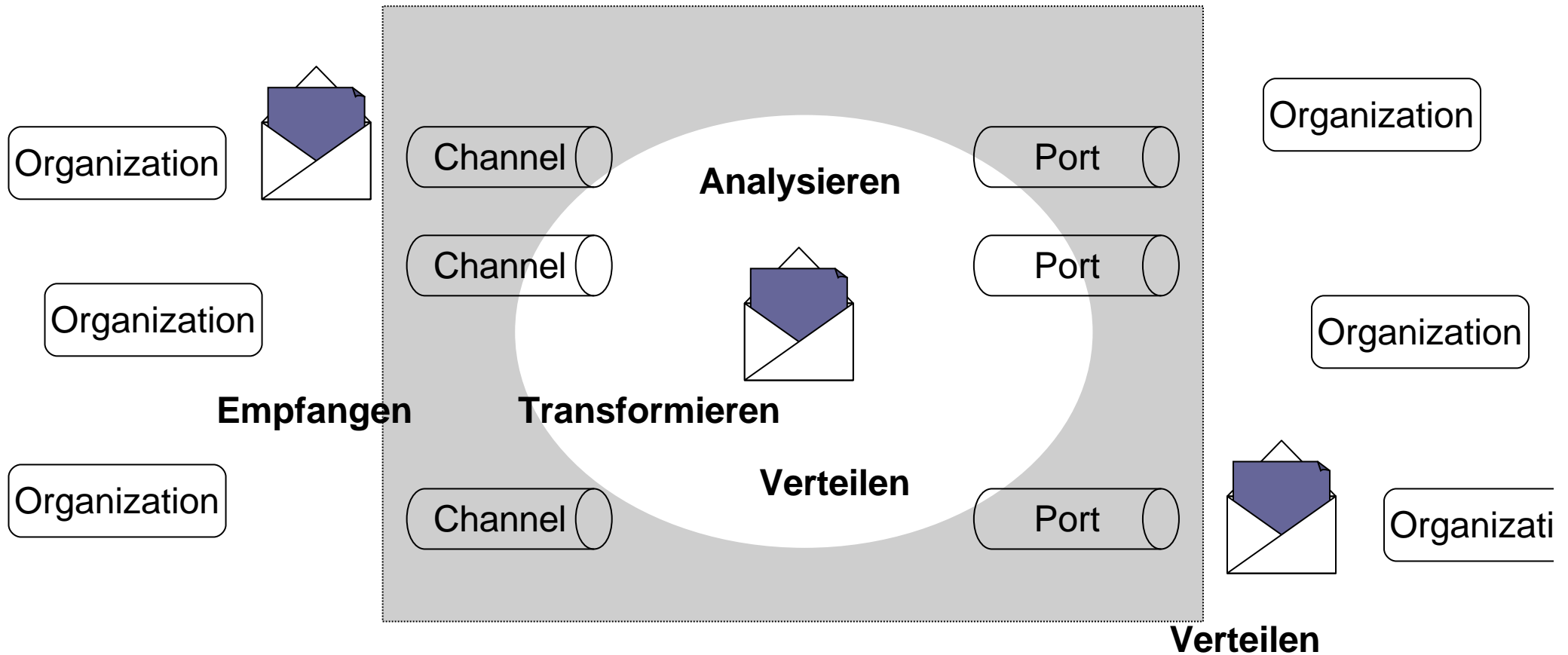




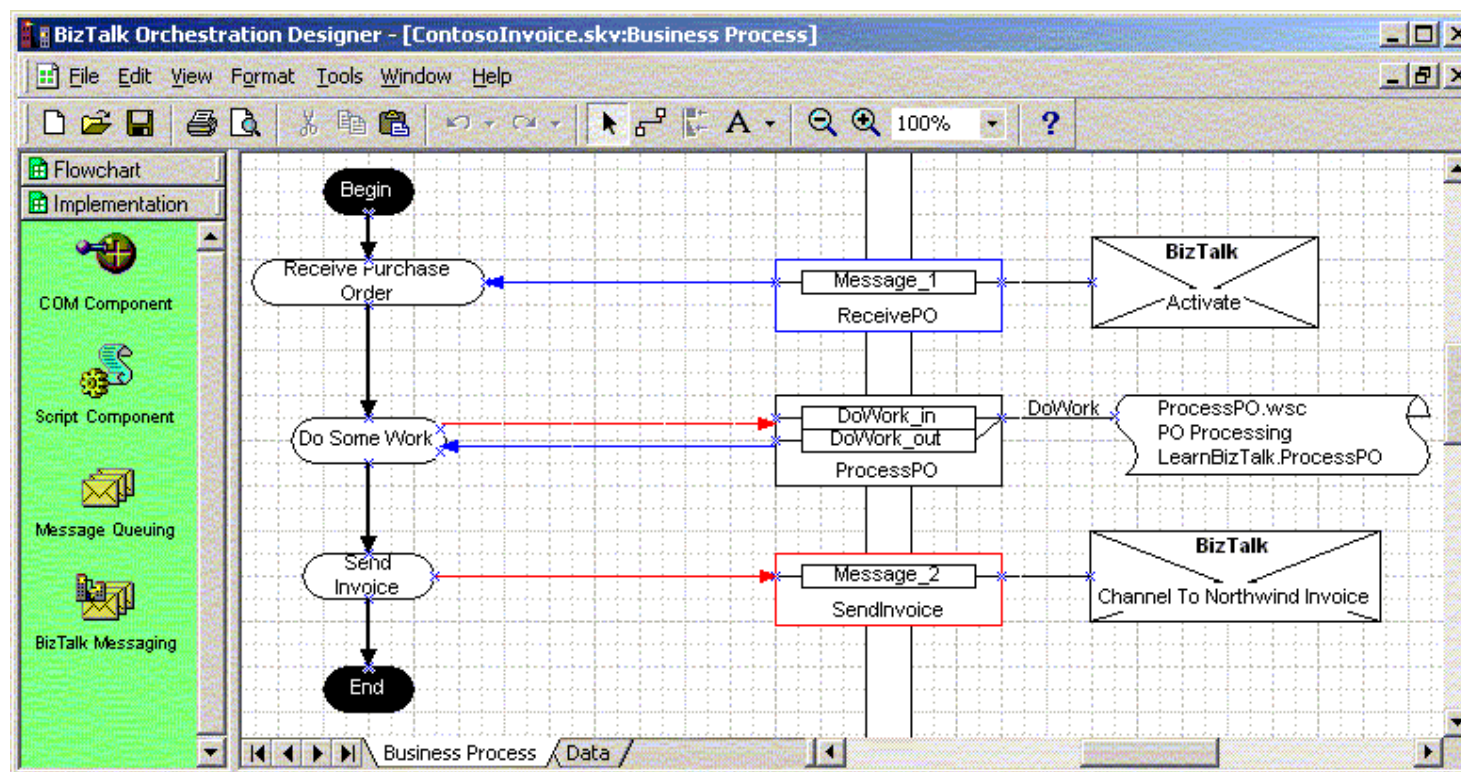
Basisdienst



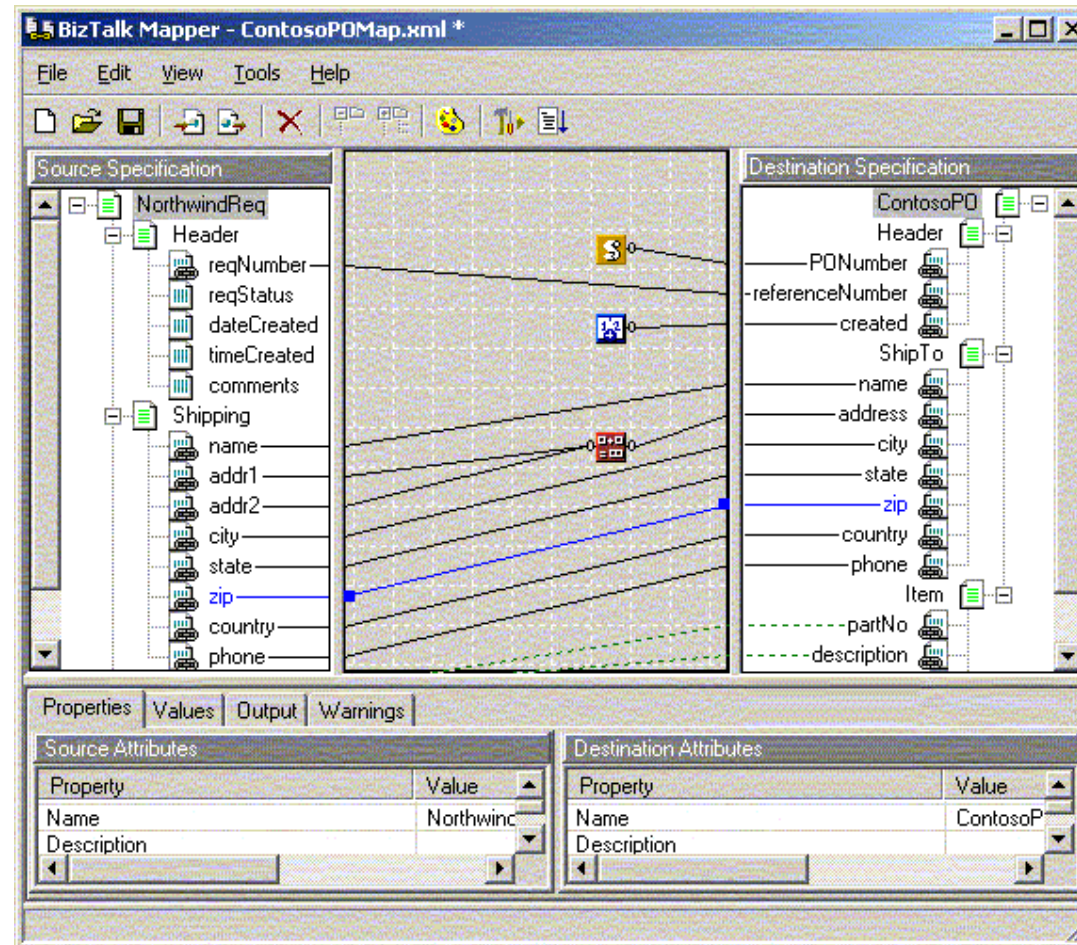
BizTalk Begriffe



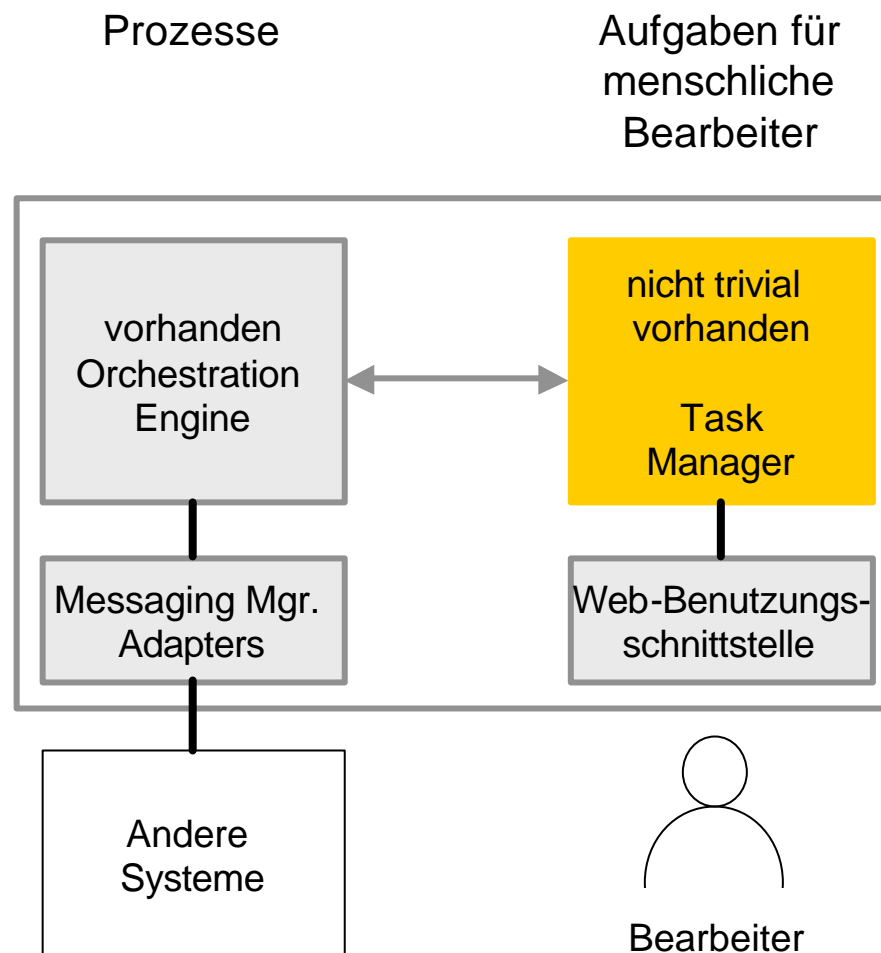
Biztalk Orchestration Designer



Biztalk Mapper das „ETL“-artige Tool

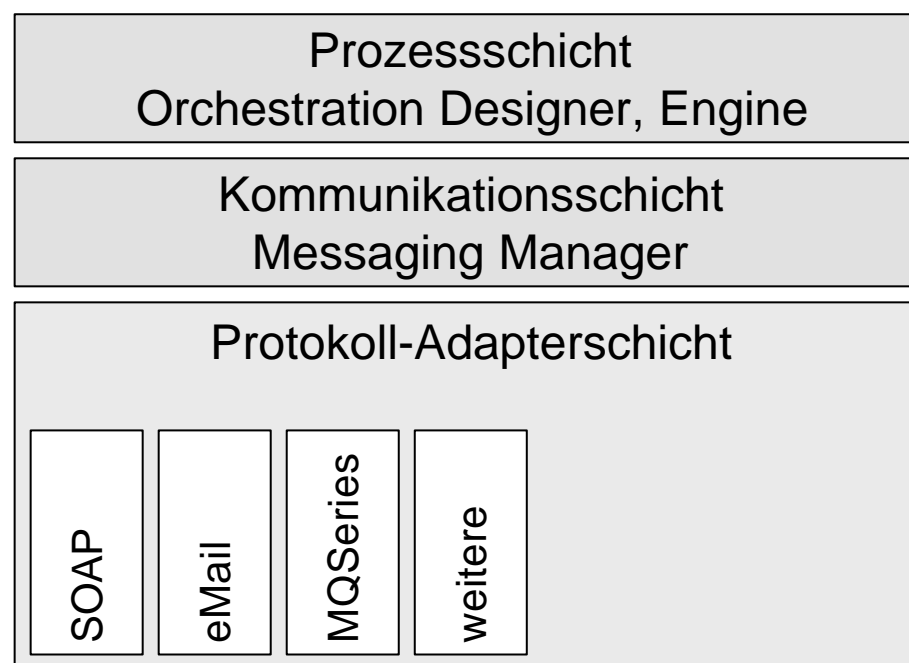


Vergleich eines Details mit Vitria





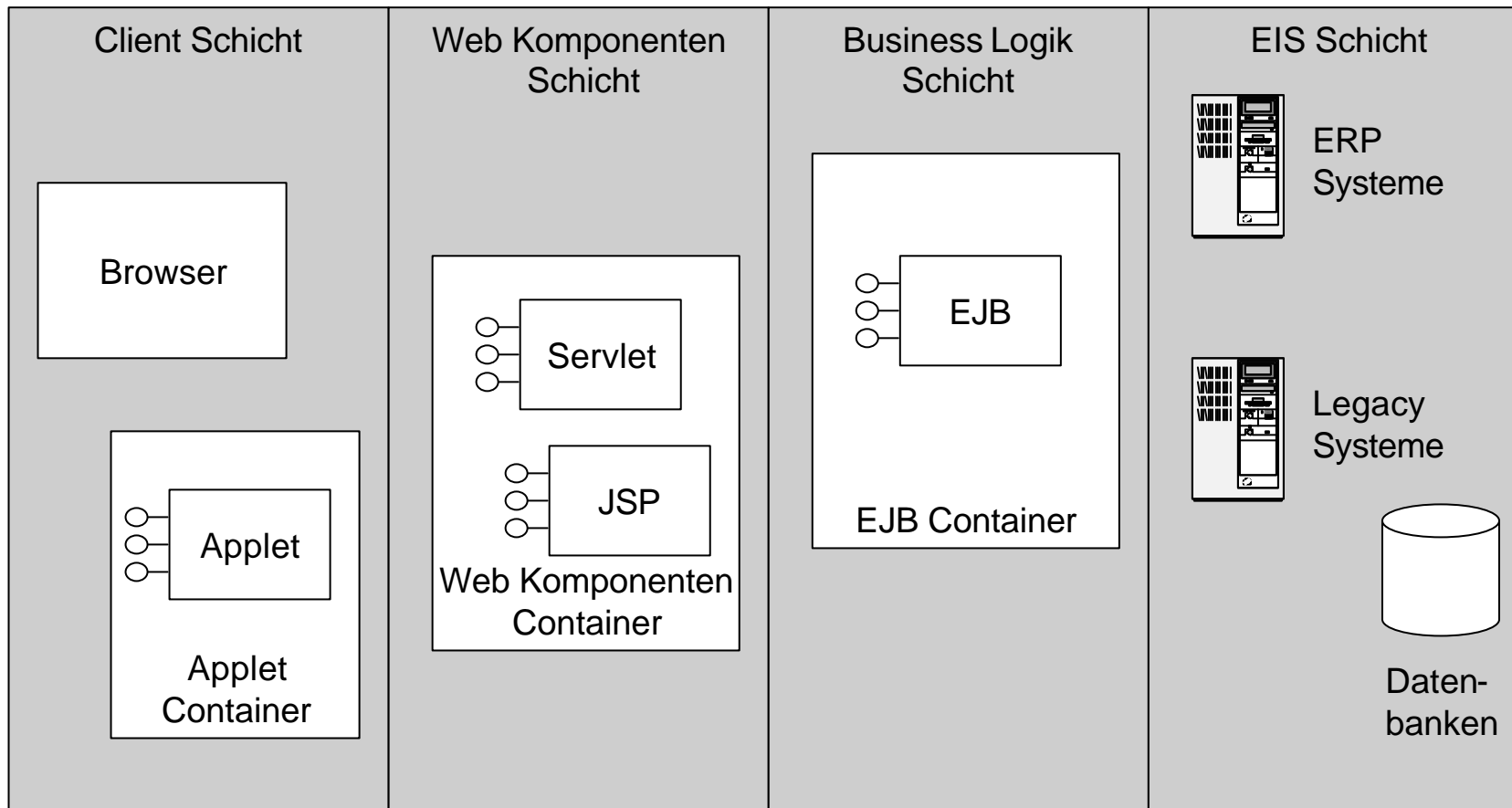
BizTalk und das Referenzmodell



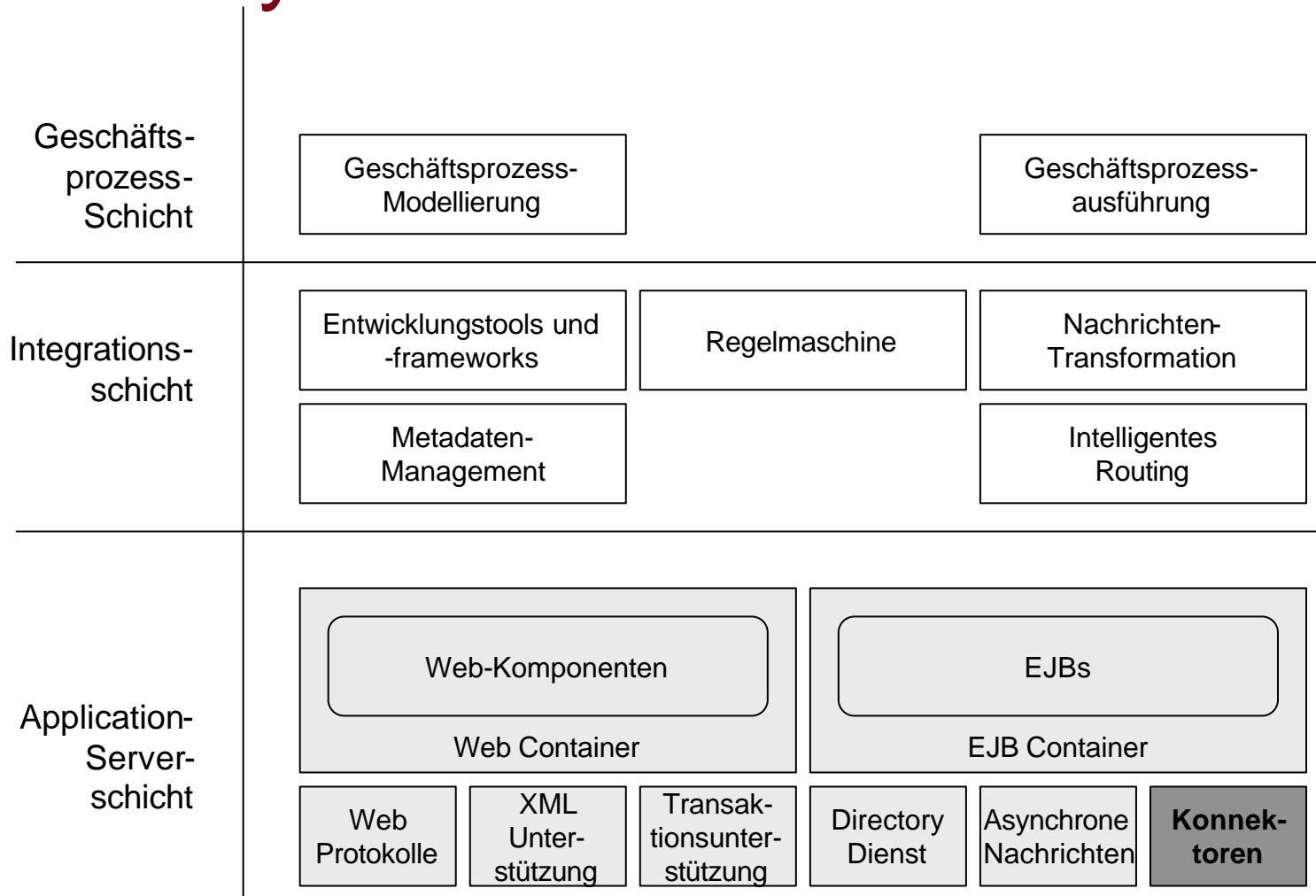


EAI und J2EE

J2EE Überblick



EAI und Layer



J2EE Connectors

